

**BARE LAND STRATA PLAN OF PART OF
LOT A DISTRICT LOT 2247 GROUP 1
NEW WESTMINSTER DISTRICT PLAN BCP39086
EXCEPT: PHASE ONE STRATA PLAN BCS3916
AND PHASE TWO STRATA PLAN BCS3916**

**STRATA PLAN BCS3916
PRELIMINARY – PHASE 3**

BCGS 92J.016



DISTANCES ARE IN METRES

THE INTENDED PLOT SIZE OF THIS PLAN IS 560mm IN WIDTH BY 864mm IN HEIGHT (D SIZE) WHEN PLOTTED AT A SCALE OF 1:2500

GRID BEARINGS ARE DERIVED FROM DUAL FREQUENCY GNSS OBSERVATIONS AND ARE REFERRED TO THE CENTRAL MERIDIAN OF UTM ZONE 10.

THE UTM COORDINATES AND ESTIMATED HORIZONTAL POSITIONAL ACCURACY ACHIEVED ARE DERIVED FROM DUAL FREQUENCY BASELINE TIES TO WHISTLER ACTIVE CONTROL MONUMENT GCM No. 997528.

THIS PLAN SHOWS HORIZONTAL GROUND-LEVEL DISTANCES UNLESS OTHERWISE SPECIFIED. TO COMPUTE GRID DISTANCES, MULTIPLY GROUND-LEVEL DISTANCES BY THE AVERAGE COMBINED FACTOR OF 0.9995010. THE COMBINED FACTOR HAS BEEN DETERMINED BASED ON AN ELLIPSOIDAL ELEVATION OF 652.1 METRES.

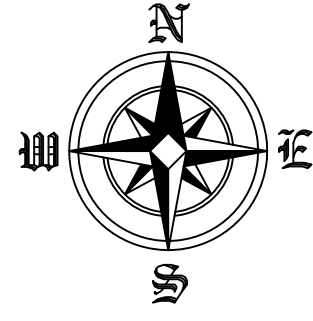
BEARINGS TO BEARING TREES ARE MAGNETIC.

LEGEND

FOUND PLACED

- DENOTES STANDARD IRON POST
- DENOTES LEAD PLUG
- ⊙ DENOTES STANDARD ROCK POST
- ⊕ DENOTES STANDARD CAPPED POST
- W DENOTES WITNESS
- ha DENOTES HECTARES
- (R) DENOTES RADIAL
- SL DENOTES STRATA LOT
- ⊙ DENOTES COMMON PROPERTY
- ⊕ DENOTES FACILITY BEING COMMON PROPERTY

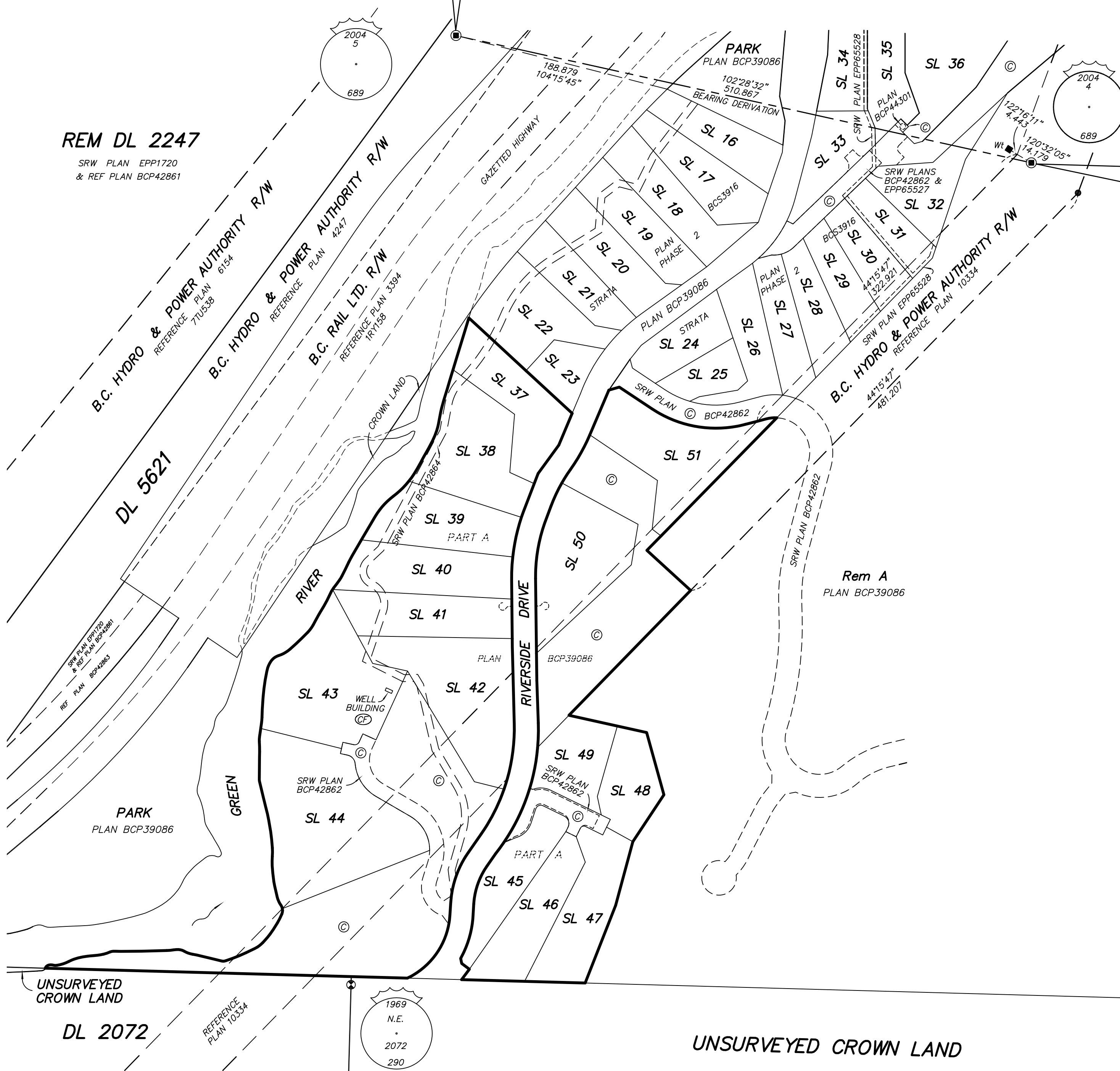
THIS PLAN SHOWS ONE OR MORE WITNESS POSTS WHICH ARE NOT SET ON THE TRUE CORNER(S).



NAME OF DEVELOPMENT
WEDGE WOODS WHISTLER

Datum: NAD83(CSRs) 4.0.0.BC.1
UTM zone 10
UTM Northing.....5558429.428
UTM Easting.....508562.157
Point combined factor: 0.9995008
Estimated horizontal positional accuracy: 0.03

Datum: NAD83(CSRs) 4.0.0.BC.1
UTM zone 10
UTM Northing.....5558319.123
UTM Easting.....509060.712
Point combined factor: 0.9994991
Estimated horizontal positional accuracy: 0.03



REM DL 2247

SRW PLAN EPP1720
& REF PLAN BCP42861

DL 5621

UNSURVEYED CROWN LAND

DL 2072

UNSURVEYED CROWN LAND

Fd	BT's	
40cm	Hemlock	298' 2.96 Mkd 15
35cm	Hemlock	Snag 17' 5.37 Mkd 27
30cm	Fir	124' Mkd 4.5
25cm	Cedar	224' Mkd 4.1

KEY PLAN

THIS BARE LAND STRATA PLAN LIES WITHIN THE JURISDICTION OF THE APPROVING OFFICER FOR THE MINISTRY OF TRANSPORTATION AND INFRASTRUCTURE
MOT FILE 01-006-21987

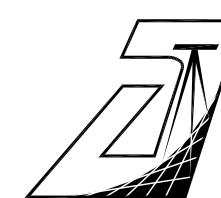
THIS PLAN IS PHASE 3 OF A 6 PHASE STRATA PLAN UNDER SECTION 224 OF THE STRATA PROPERTY ACT LYING WITHIN THE JURISDICTION OF THE APPROVING OFFICER FOR THE MINISTRY OF TRANSPORTATION AND INFRASTRUCTURE
MOT FILE 01-006-21987

THE COMMON FACILITY (WELL BUILDING) IN THIS PHASE IS SUBJECT TO THE CONDITIONS SET OUT IN THE FORM P FILED FOR THIS STRATA PLAN

2017-MAR-17
DRAFT

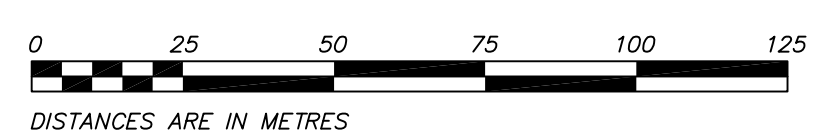
THE FIELD SURVEY REPRESENTED BY THIS PLAN WAS COMPLETED ON THE ___th DAY OF MARCH, 2017.
DARRYL J. MITCHELL, BCLS 689

THIS PLAN LIES WITHIN THE SQUAMISH-LILLOOET REGIONAL DISTRICT



AXIS LAND SURVEYING LTD.
B.C. & CANADA LANDS SURVEYORS
101, 32885 VENTURA AVENUE
ABBOTSFORD, B.C. V2S 5A3
T: 604-853-2700 F: 604-853-2710
FILE: M 4217
DWG: 4217-PS3

STRATA PLAN BCS3916 PRELIMINARY - PHASE 3



DISTANCES ARE IN METRES
THE INTENDED PLOT SIZE OF THIS PLAN IS 560mm IN WIDTH BY 864mm IN HEIGHT (D SIZE) WHEN PLOTTED AT A SCALE OF 1:1250



PRESENT NATURAL BOUNDARY AND NATURAL BOUNDARY ACCORDING TO PLAN BCP39086

Datum: NAD83(CSRS) 4.0.0.BC.1

POINT	UTM Northing	UTM Easting
L1	5557624.059	508209.365
L2	5557623.889	508216.713
L3	5557630.828	508237.378
L4	5557636.000	508265.064
L5	5557637.495	508321.639
L6	5557627.580	508358.951
L7	5557639.622	508390.044
L8	5557671.383	508411.867
L9	5557710.096	508402.910
L10	5557783.791	508391.816
L11	5557853.147	508394.790
L12	5557887.657	508402.123
L13	5557918.568	508438.333
L14	5557998.680	508483.874
L15	5558049.391	508525.774
L16	5558083.222	508544.732
L17	5558120.518	508553.744
L18	5558022.154	508499.106
L19	5557957.804	508461.360

